

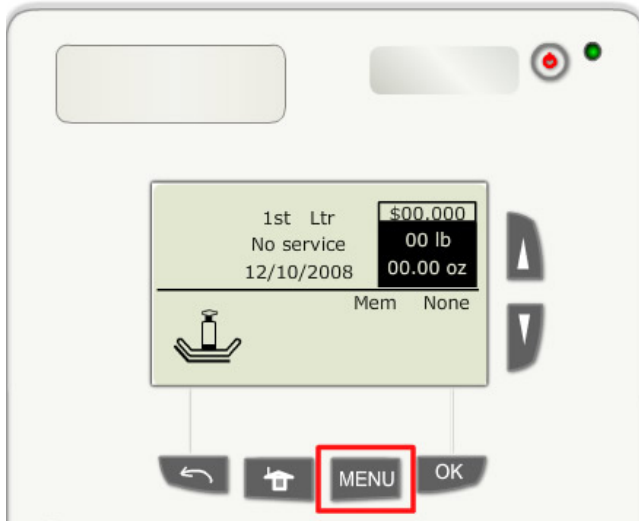
IM420, IM440 – Loading (Installing) Rates

The following conditions must be met before loading (installing) rates:

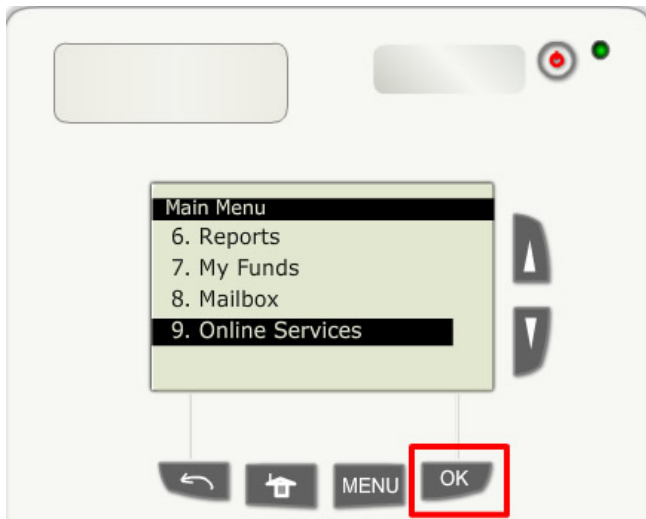
- The customer must have a rate protection contract.
- The machine must be declared.

Loading (Installing) Rates:

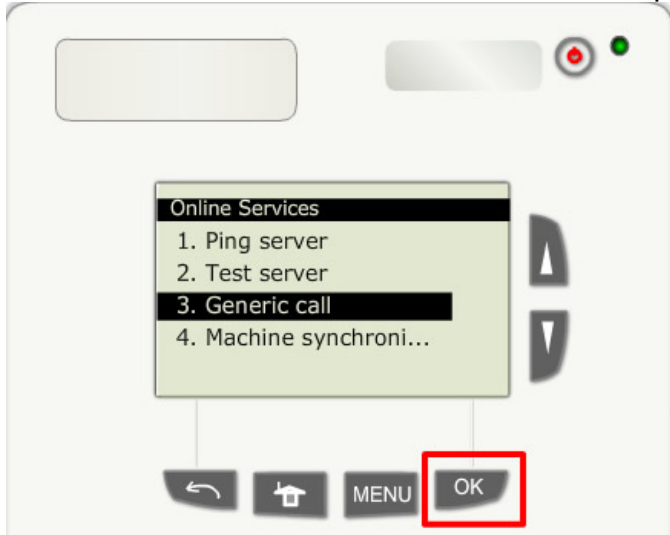
1. Press the “MENU” button.



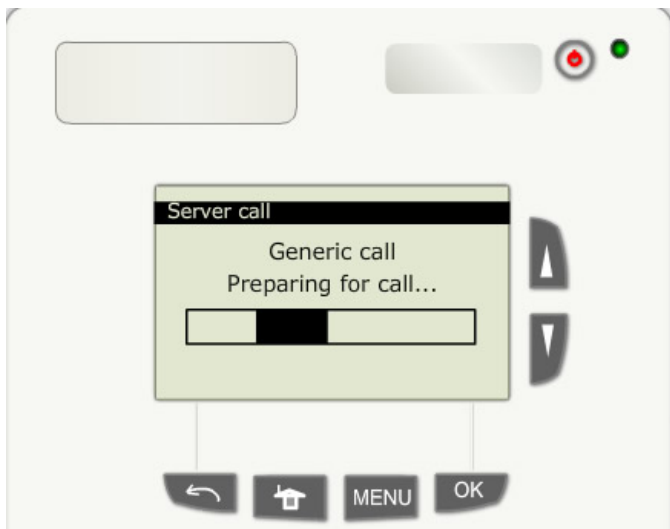
2. Press the down arrow button until “Online Services” is highlighted.
- Press the “OK” button to access the next step.



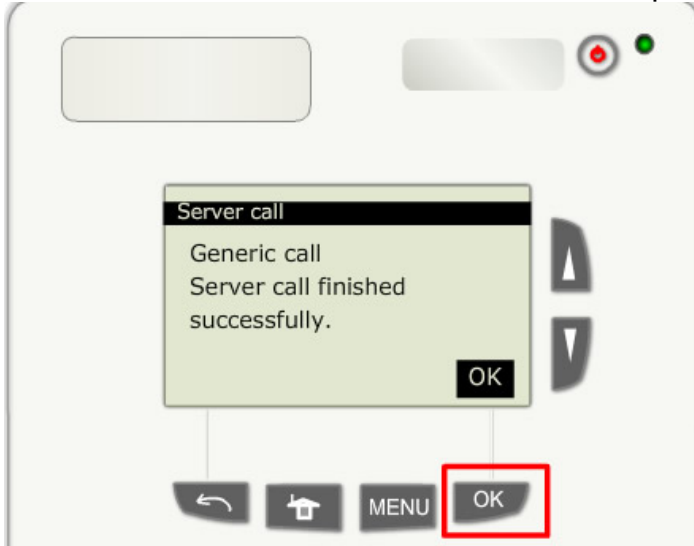
3. Press the down arrow button until "Generic call" is highlighted.
 - Press the "OK" button to access the next step.



4. The server call consists of:
 - Preparing for the call
 - Dialing the call
 - Transaction in progress**DO NOT INTERRUPT THIS PROCESS.**



5. The Server call finished successfully.
- Press the "OK" button to access the next step.



6. Press the "Back" button several times until the homescreen is displayed.

